

# UNIC-CASS Mentoring Session



## 2nd Progress Questionnaire Results

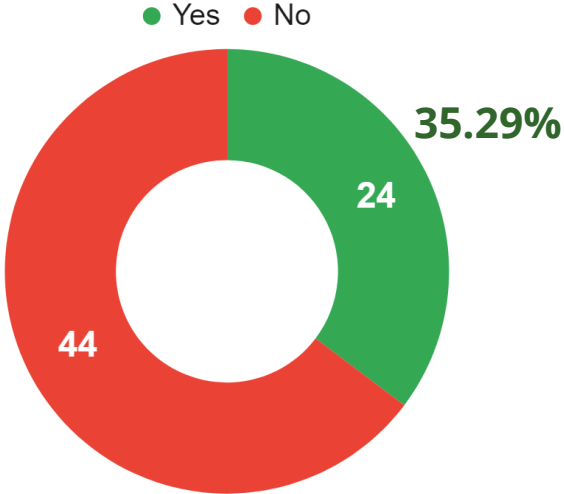
---

Presented by: D-to-T mentoring team

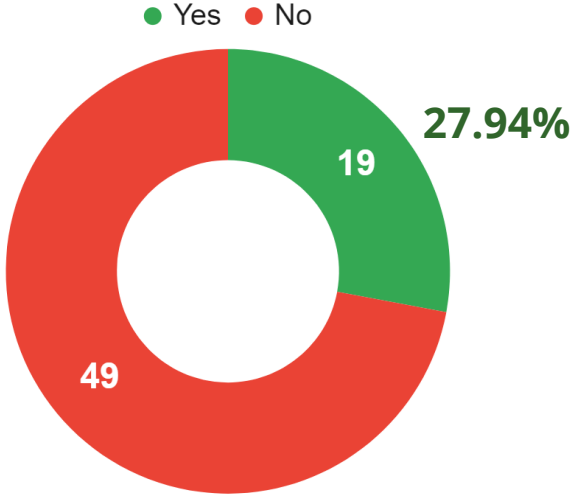
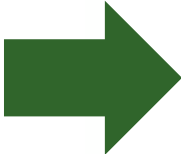
October 23, 2024



# Questionnaire Statistics

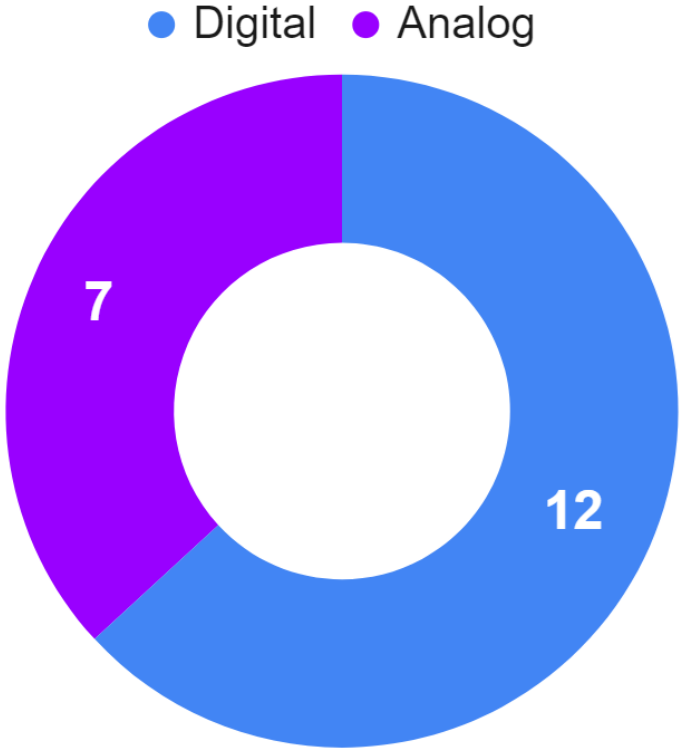


1st Progress Questionnaire



2nd Progress Questionnaire

# Distribution of DTs



# Digital-Specific Questionnaire Results

All of the 12 Digital Design Teams  
That Filled the 2nd Progress Questionnaire



Completed RTL



Completed Synthesis

Among the teams with realistic area estimations  
mean area of  $0.57\text{mm}^2$

Smallest Digital Block:  
 $0.035\text{mm}^2$

Biggest Digital Block:  
 $2\text{mm}^2$



# AMS-Specific Questionnaire Results

All of the 7 Analog Design Teams  
That Filled the 2nd Progress Questionnaire

✓ Completed the Schematic

Among the teams with realistic area estimations  
mean area of  $0.57\text{mm}^2$

Smallest Analog Block:  
 $0.018\text{mm}^2$

Biggest Analog Block:  
 $2\text{mm}^2$

# DT Distribution per IC

# Distribution of DTs x ICs

43

**#DTs that missed all questionnaires**

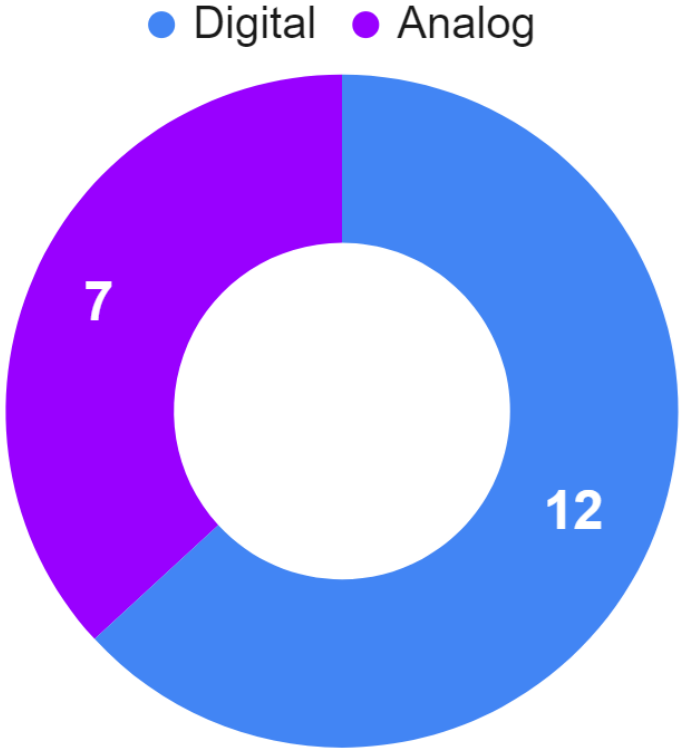
6

**#DTs that filled only the 1st questionnaire**

19

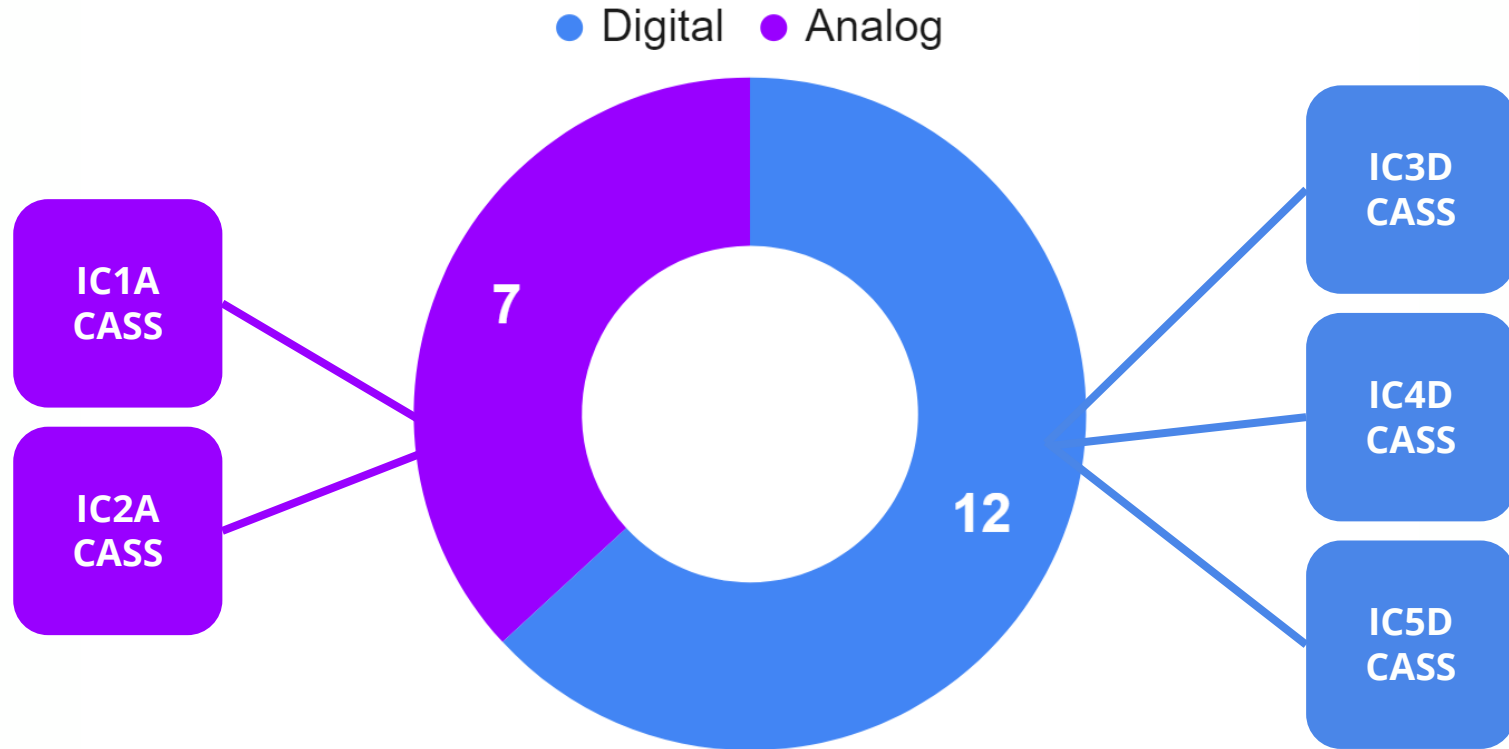
**#DTs that filled at least the 2nd questionnaire :)**

# Distribution of DTs x ICs





# Distribution of DTs x ICs



## IC1A - CASS

**Colombia**

UNIC-CASS\_Ring\_Oscillators

**Brazil**

CAFE

**Ecuador**

PWMUSFQ

# ANALOG - CARAVAN

## IC2A - CASS

Sri Lanka

SAR\_ADC

Vietnam

vco\_adc2

Indonesia

TSAR\_ADC

India

**CIM\_NOR**

REVIEW AREA ESTIMATION

# ANALOG - CARAVAN

# IC3D - CASS

**Ecuador**

AGROCHIP

**Brazil**

OSIRIS

**Brazil**

RAxM

# DIGITAL - CARAVEL

# IC4D - CASS

India

MACP

India

S3CHIP

India

**Scoreboard**

Sri Lanka

**SLRV**

India

**SLOPEDETECT**

REVIEW AREA ESTIMATION

# DIGITAL - CARAVEL

# IC5D - CASS

Malaysia

VMSU8

Vietnam

HS\_ASCON

Vietnam

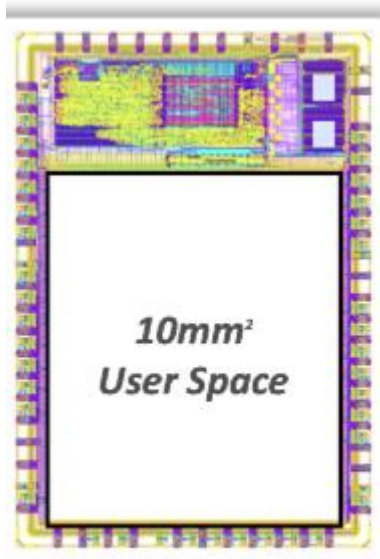
LOVERS-BEC

India

**ENCRYX**

REVIEW AREA ESTIMATION

# DIGITAL - CARAVEL



CARAVEL

## REMEMBER!

Caravel user space has  $10\text{mm}^2$  of area.  
Values  $> 10\text{mm}^2$  don't make sense!

**Thanks, any questions? :)**  
feel free to reach out

